

ARB AIR LOCKER *Air Operated Locking Differentials*

CKMTP12

Portable Air Compressor

Specs:

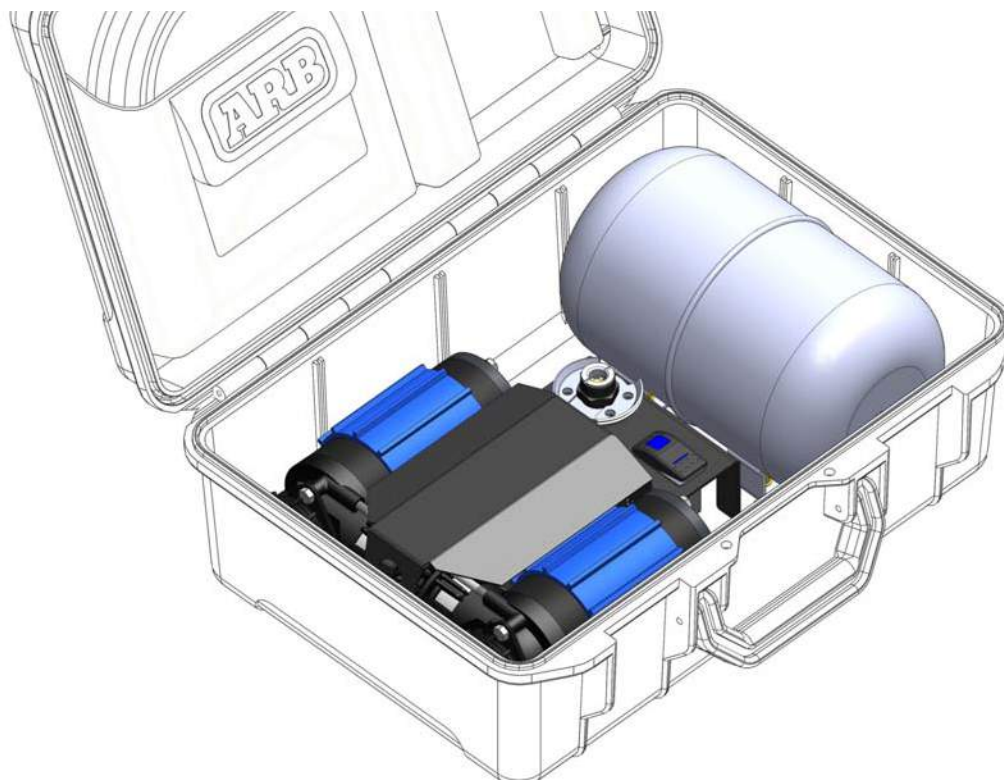
| ITEM # | QTY | DESCRIPTION | PART # | NOTES |
|--------|-----|----------------------------------|---------|-------|
| 01 | 1 | CARRY CASE | 270104 | |
| 02 | 1 | HOSE ASSEMBLY, TANK INPUT | 170305 | |
| 03 | 8 | SCREW (COUNTERSUNK M6 x 16) | 200715 | |
| 04 | 1 | TWIN COMPRESSOR MOUNT ASSEMBLY | 320108 | |
| 05 | 2 | BOLT (M6 x 60mm) | 200703 | |
| 06 | 2 | FLAT WASHER | 6151046 | |
| 07 | 2 | O-RING (BS010V75) | 160242 | |
| 08 | 1 | MANIFOLD CAP (1/4" NPT) | 320214 | |
| 09 | 1 | ADAPTER (1/4" NPT TO JIC-4) | 170631 | |
| 10 | 2 | COMPRESSOR ASSEMBLY | CKM01 | |
| 11 | 2 | AIR FILTER BASE | 320501B | 1 |
| 12 | 2 | AIR FILTER ELEMENT (DISK TYPE) | 290503 | 1 |
| 13 | 2 | AIR FILTER COVER | 320501A | 1 |
| 14 | 8 | BOLT (M6 x 12mm) | 200702 | |
| 15 | 2 | AIR FILTER FLANGE (1/4" NPT) | 320212 | |
| 16 | 2 | O-RING (BS029N70) | 160250 | 2 |
| 17 | 3 | O-RING (BS031N70) | 160241 | |
| 18 | 1 | COUPLER MANIFOLD | 320227 | |
| 19 | 1 | PRESSURE SWITCH (1/4" NPT) | 180901 | 1 |
| 20 | 1 | COVER ASSEMBLY, CKMTP | 320109 | 3 |
| 21 | 1 | SWITCH BRACKET, CKMTP | 320230 | |
| 22 | 1 | HOSE COUPLING (US STD FEMALE) | 171403 | |
| 23 | 1 | SWITCH (12V) | 180209 | 2 |
| | 1 | SWITCH COVER (ARB COMPRESSOR) | 180212 | |
| 24 | 1 | CARRY CASE POCKET | 270105 | |
| 25 | 1 | HOSE ASSEMBLY, TANK OUTPUT | 170306 | |
| 26 | 1 | AIR TANK | 171501 | 3 |
| * | 1 | INFLATION ACCESSORY KIT (US STD) | 171303 | |
| * | 1 | HOSE ASSEMBLY (US STD) | 171301 | |
| * | 1 | AIR BLOW GUN | 171309 | |
| * | 1 | WIRING LOOM (CKMP12 SUPPLY) | 180412 | |
| * | 1 | WIRING LOOM (CKMP12 SWITCH) | 180413 | |

| | |
|-----------------|---|
| Voltage | 12 V DC |
| Current Draw | No-Load 28.4A Load 50.4A |
| Air Flow | 174.4L/min @ 0kPa [6.16CFM @ 0psi] 131.8L/min @ 200kPa [4.68CFM @ 29psi] |
| Total Weight | 15kg [33lbs] |
| Size | 186mm x 478mm x 355mm (H,L,W) [7.3" x 18.8" x 14"] |
| Outlet | Hose coupling, US std female |
| Pressure Switch | Open 1030kPa [150psi] Closed 930kPa [135psi] |
| Safety Valve | Open @ > ~1240kPa [180 PSI] |

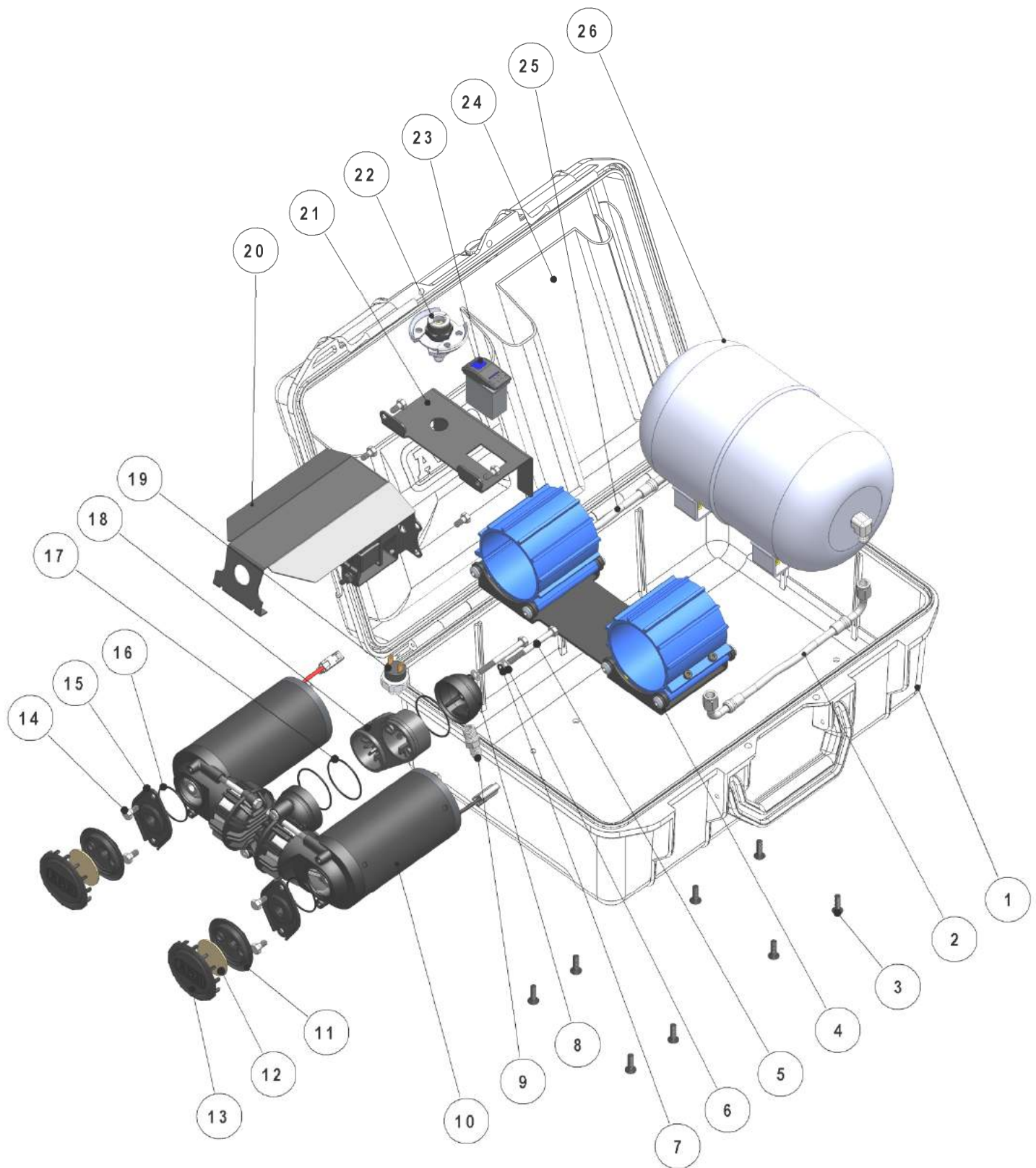
Notes:

- 1 AIR FILTER BASE (11) & COVER (13) available only in AIR FILTER ASSY #320501 which also includes the element.
- 2 Complete set of CKM series O-ring seals is available as O-ring Service Kit #320301. (Order two for CKMTP12)
- 3 Cover assembly is preassembled with the relays, fan and wiring loom.

* Not illustrated in exploded view.



CKMTP12 Portable Air Compressor – Exploded Parts Diagram



CKMTP12

CKMTP12**Portable Air Compressor – Detailed Specifications**

| GENERAL SPECS | | METRIC | IMPERIAL | |
|-------------------------------|--------|-----------------|----------|----------------|
| SUPPLY VOLTAGE | 12 | Volts DC | 12 | Volts DC |
| MAX CURRENT DRAW (each motor) | 34.3 | Amps @ 1030 kPa | 34.3 | Amps @ 150 PSI |
| MAX CURRENT DRAW (total) | 68.6 | Amps @ 1030 kPa | 68.6 | Amps @ 150 PSI |
| FUSE RATING (each motor) | 40 | Amps | 40 | Amps |
| RELAY RATING (each motor) | 40 | Amps | 40 | Amps |
| WEIGHT (total kit) | 15 | kgs | 33 | lbs |
| DIMENSIONS | | | | |
| -LENGTH | 478 | mm | 18.8 | inches |
| -WIDTH | 355 | mm | 14.0 | inches |
| -HEIGHT | 186 | mm | 7.3 | inches |
| DUTY CYCLE @ 22°C [72°F] | 100 | % | 60 | mins. per hour |
| PRESSURE SWITCH CLOSED | < 930 | kPa | < 135 | PSI |
| PRESSURE SWITCH OPEN | > 1030 | kPa | > 150 | PSI |
| SAFETY VALVE PRESSURE | > 1240 | kPa | > 180 | PSI |
| MOTOR THERMAL CUT-OUT | 115 | degrees C | 239 | degrees F |
| MAX. AMBIENT TEMPERATURE | 100 | degrees C | 212 | degrees F |

| SPECS @ NO LOAD | METRIC @ 0 kPa | | IMPERIAL @ 0 PSI | |
|-----------------|----------------|--------|------------------|------|
| CURRENT DRAW | 28.4 | Amps | 28.4 | Amps |
| AIR FLOW RATE | 174.4 | L/min. | 6.16 | CFM |

| SPECS @ TYRE PRESSURE | METRIC @ 200 kPa | | IMPERIAL @ 29 PSI | |
|-----------------------|------------------|--------|-------------------|------|
| CURRENT DRAW | 50.4 | Amps | 50.4 | Amps |
| AIR FLOW RATE | 131.8 | L/min. | 4.68 | CFM |

NOTE: The specifications above were recorded under laboratory conditions at 22°C [72°F].

| EXTERNAL CONNECTIONS SPECS | |
|---|---|
| AIR INTAKE THREADS (female) | 1/4-18 NPSC (parallel pipe thread) |
| AIR FILTER THREAD (male) | 1/4-18 NPT (tapered pipe thread) |
| PRESSURE SWITCH THREAD | 1/4-18 NPT (tapered pipe thread) |
| SAFETY VALVE PORT THREAD | 1/8 BSPP (parallel pipe thread) |
| MANIFOLD OUTLET THREAD | 1/4-18 NPT (tapered pipe thread) |
| STAINLESS BRAIDED HOSES | JIC-4 [AN-4] |
| AIR COUPLING FITTING TYPE (international equivalent standards) | 'US Industrial Standard' ISO 6150 B Rectus series 23/24/1400 Tema series 1400 Legris series 23 DYNAQUIP D3 CEJN 310 US.MIL.C 4109 Norma / AFNOR: NF.E49.053 Parker series 30-¼" and 20-¼" Aignep 220 Hansen series 3000 Norgren series 237 Gromelle series 600 |

WARRANTY

This ARB Air Compressor is designed to provide many years of trouble free recreational use, and is warranted to be free from manufacturing defects for two (2) years from the date of purchase.



CKMTP12 Portable Air Compressor – Overview of Design Features**Description:**

The ARB CKMTP12 twin portable compressor was specifically designed as a compact sized yet high performance compressed air source for rapid inflation of large tires, and to suit the high volume airflow needs of most air powered tools. The ARB CKMTP12 is a world class recreational product designed and built to commercial / industrial standards to survive harsh and demanding outback conditions.

Features:

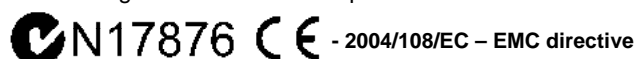
- Compact twin motor, dual cylinder design makes it the highest flowing portable compressor of its size on the market at 174LPM [6.16CFM].
- Constructed entirely of light weight, high strength engineering grade materials, including military and aerospace standard components.
- Integrated aluminium air tank and pressure switch regulates pressure between 930kPa [135PSI] and 1030kPa [150PSI] suited to most air powered tools.
- Mounted in a waterproof carry case constructed from a durable impact resistant polymer. The carry case has convenient compartments for storing the air hose and other compressor accessories.
- High efficiency design consumes only 56 Amps at maximum air flow.
- Built with sealed components for moisture and dust resistance.
- Hard-anodized cylinder bores and PTFE (Teflon) impregnated carbon fibre piston seals for reduced friction and maximum trouble free life.
- Ducted IP55 sealed brushless DC cooling fan and anodized motor mounting brackets effectively dissipate heat from the motors, heads and electronics allowing for a 100% duty cycle (under room temperature conditions).
- Anti-vibration / sound deadening is integrated into the mount.
- High density and high flow washable sintered bronze air filter element.
- Pressure switch and relay equipped electrical system prevents run-on when not filling, or any damage to compressor or hoses as a result of the pressure generated from a kinked air line.
- Illuminated isolating switch is easy to see at night, and protects the user from hazardous sparking when connecting the alligator clips to the battery terminals.
- Equipped with dual heavy duty Maxi-Fuses for professional in-line circuit protection and true circuit redundancy in case of a fault.
- Motors are water sealed, 100% ball bearing equipped (i.e. no bushings), and feature a unique linear brush pre-load system for extra long life, low heat and quiet operation throughout the life of the unit.
- Motors are internally thermal protected against extreme temperature damage.
- Compressor pistons are equipped with a European made high shock rated roller bearing.
- Over-pressure safety valve equipped as back-up protection from either pressure switch failure, thermal over pressure generated in a hot vehicle (i.e., no need to drain pressure when finished use), or accidental connection to an external high pressure source.
- Fully serviceable and all replacement parts available.
- Hose couplings are specially designed corrosion resistant, one-handed (push-lock) quick connect type to suit US industrial standard air fittings (Ref: compatible types listed in detailed specifications).
- EMF suppressed for use in proximity to sensitive electronic equipment. CE and C-Tick compliant.

CKMTP12 Portable Air Compressor – Overview of Design Features

Kit Includes:

- Fully assembled and tested air compressor and air tank mounted into a water proof carry case.
- Canvas compartment for storing air hose and compressor accessories.
- Complete wiring loom with automotive grade alligator clamp type battery contacts, and a pressure switch driven automotive relay control circuit.
- OEM quality IP54 rated illuminated compressor isolating switch.
- 2 x splash resistant air filters with washable high-flow sintered bronze filter cartridges.
- 6 meter [20 ft] long high quality abrasion and heat resistant air hose with male to female couplings.
- Air blow gun with US industrial standard male air fitting.
- Inflation accessories kit including high-flow tyre filler attachment (US industrial standard) with integral stop-valve, a Schrader valve to US industrial standard adaptor, and extra nozzle attachments for inflating items such as sports balls, air mattresses, etc.
- Comprehensive photo illustrated operating instructions.

* CKMTA12 and CKMTA24 are certified compliant to EN 55014.1 (AS/NZS CISPR 14.1) and meets or surpasses the following Australian and European directives.



Optional Accessories:

ARB offers a range of accessories to help maximize the potential of your CKMTP12.

| | |
|---------------|--|
| ARB605 | Inflation/deflation gauge (stainless braided, lock-on) |
| ARB606 | Tyre inflator wand (long reach, push-on) |
| ARB607 | Tyre inflator chuck (angled, lock-on) |
| 171301 | 6m [20ft] high temperature inflation hose with m/f US std air couplings (for additional length requirements) |