

RD84

GM 8.5"/10 Bolt/AAM 860, 30 SPL

****THIS MODEL WAS SUPERSEDED BY RD222, CROSSED OUT PARTS NOT AVAILABLE**

PARTS LIST

ITEM #	QTY	DESCRIPTION	PART #	NOTES
1	1	SPLINED SIDE GEAR	SEE NOTE	3
2	1	SPIDER BLOCK	070902SP	
3	1	LONG CROSS SHAFT	060204SP	
4	1	SIDE GEAR	SEE NOTE	3
5	2	SIDE GEAR THRUST WASHER	SEE NOTE	4
6	1	COUNTERSUNK SCREW (PK OF 2)	200213SP	
7	1	RETAINING PIN SET (PK OF 4)	120601SP	
8	1	SEAL HOUSING O-RINGS (PK OF 2)	160235SP	1
9	1	SEAL HOUSING ASSY (Ø73.4 [2.9"])	081801	
*	1	SEAL HOUSING ASSY (Ø77.8 [3.1"])	081802	
10A	1	SHIM KIT (Ø73.0 [2.9"])	SHK003	
*	1	MASTER SHIM (OD73.2 [2.9"])	150325	
10B	1	SHIM KIT (Ø77.8 [3.1"])	SHK008	
*	1	MASTER SHIM (OD77.7 [3.1"])	150320	
11	2	TAPERED ROLLER BEARING (SMALL)	160114	2
12	1	FLANGE CAP KIT	028403SP	
13	1	BONDED SEAL	160702SP	
14	1	CLUTCH GEAR & WAVESPRING KIT	050901SP	
15	1	WAVESPRING	150701SP	
16	1	SHORT CROSS SHAFT	060403SP	
17	3	PINION GEAR	SEE NOTE	3
18	3	PINION THRUST WASHER	SEE NOTE	4
19	1	DIFFERENTIAL CASE	013003SP	
*	1	C-CLIP KIT	CCK005	
*	1	PUSH-IN FITTING (5mm to 1/8" BSPP)	170201SP	
*	1	AIR LINE (5mm DIA X 6m LONG)	170301SP	
*	1	BULKHEAD FITTING KIT (O-RING TYPE)	170111	
*	1	SOLENOID VALVE (12V)	180103	
*	1	CABLE TIE (PK OF 25)	180305	
*	1	SWITCH	180209SP	
*	1	SWITCH COVER (REAR)	180211SP	
*	1	OPERATING & SERVICE MANUAL	210200	
*	1	INSTALLATION GUIDE	210284	

* *Not illustrated in exploded view*

NOTES

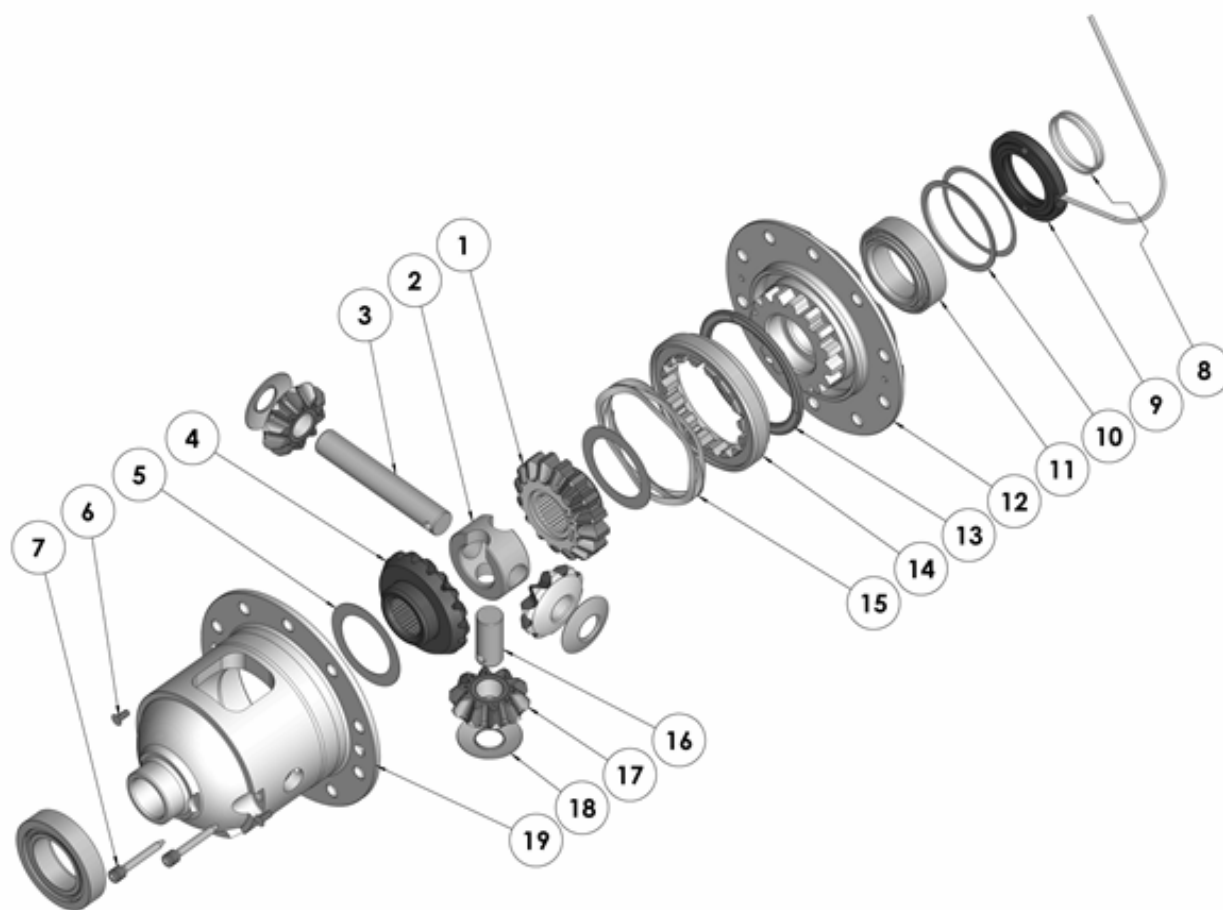
- 1 For replacement O-rings use only BS133 Viton 75.
- 2 For replacement bearing on early model 'small bearing' (Ø73.43mm [2.891"]) axle use Timken part # LM102949 / LM102911.
For replacement bearing on late model 'large bearing' (Ø77.79mm [3.063"]) axle use Timken part # LM603049 / LM603012.
- 3 Available only as complete 5 gear set #728H051C
- 4 Available only as complete thrust washer kit #730H01
- Ring gear bolts are 7/16" - 20 left-hand thread, and must be removed in a clockwise direction.
- Thicker aftermarket ring gears may require modification to remove the cross shaft. Refer to tech note (Section 5.6).
- For the 28 spline model see RD83 (Section 2.83).

RD84

GM 8.5"/10 Bolt/AAM 860, 30 SPL

****THIS MODEL WAS SUPERSEDED BY RD222, CROSSED OUT PARTS NOT AVAILABLE**

EXPLODED DIAGRAM



SPECIFICATIONS

Axle Spline	30 tooth, Ø33.3mm [1.31"]
Ratio Supported	2.73:1 & up
Ring Gear ID	127.0mm [5.00"]
Ring Gear OD	216mm [8.5"] & 219mm [8.63"]
Ring Gear Bolts	10 bolts on Ø156mm [6.14"]
Ring Gear Torque	88Nm [65 ft-lb] (GM 8.5") 108Nm [80 ft-lb] (AAM 860)
Backlash	0.15-0.25mm [0.006-0.010"]
Bearing Cap Torque	81Nm [60 ft-lb] (GM 8.5") 108Nm [80ft-lb] (AAM 860)

ARB Corporation Ltd • 42-44 Garden St Kilsyth VIC 3137 Australia
ARB 4X4 Accessories USA • 720 SW 34th St Renton WA 98057 USA
Australia & International Customer Service • +61 3 9761 6622
North America Customer Service • Toll Free 866 293 9078
www.arb.com.au (AUS & Int) www.arbusa.com (N. America)