

RD55B

Ford 9",31 SPL**

****THIS MODEL WAS SUPERSEDED BY RD119, CROSSED OUT PARTS NOT AVAILABLE**

PARTS LIST

ITEM #	QTY	DESCRIPTION	PART #	NOTES
01	1	SEAL HOUSING WASHER	151204	
02	1	SEAL HOUSING KIT	081301SP	
03	1	SEAL HOUSING O-RINGS (PK OF 2)	160220SP	1
04	2	SEAL HOUSING BRACKET	220102	
05	1	SWIVEL AIR FITTING (5mm)	170209	
06	1	SEAL HOUSING COLLAR	081302	
07	1	TRANSFER TUBE O-RING	160234	
08	3	GRUB SCREW (KNURL POINT, M6)	200305	
09	3	GRUB SCREW (DOG POINT, M6)	200306	
10	2	SHORT CROSS SHAFT	060307	
11	1	COUNTERSUNK SCREW (PK OF 2)	200209SP	
12	1	DIFFERENTIAL CASE	012204	
13	1	LONG CROSS SHAFT	060107SP	
14	1	SIDE GEAR	SEE NOTE	2
15	4	PINION GEAR	SEE NOTE	2
16	1	SPIDER BLOCK	070501SP	
17	1	PINION THRUST WASHER (PK OF 4)	151106SP	
18	1	SPLINED SIDE GEAR	SEE NOTE	2
19	1	S GEAR THRUST WASHER (PK OF 2)	151003SP	
20	1	BONDED SEAL	160703SP	
21	1	CLUTCH GEAR	050603	
22	1	RETURN SPRINGS (PK OF 12)	150107SP	
23	1	FLANGE CAP	022302	
24	10	RING GEAR BOLT	200601	
25	1	INNER COMPRESSION NUT	170613	
*	1	BULKHEAD FITTING KIT (5 to 5mm)	170104	
*	1	PUSH-IN FITTING (5mm to 1/8"BSPP)	170201SP	
*	1	AIR LINE (5mm DIA X 6m LONG)	170301SP	
*	1	TUBE SUPPORT SPRING (internal)	170702	
*	1	SOLENOID VALVE (12V)	180103	
*	1	SWITCH	180209SP	
*	1	SWITCH COVER (FRONT)	180210SP	
*	1	SWITCH COVER (REAR)	180211SP	
*	1	CABLE TIE (PK OF 25)	180305	
*	1	OPERATING & SERVICE MANUAL	210200	
*	1	INSTALLATION GUIDE	210255	

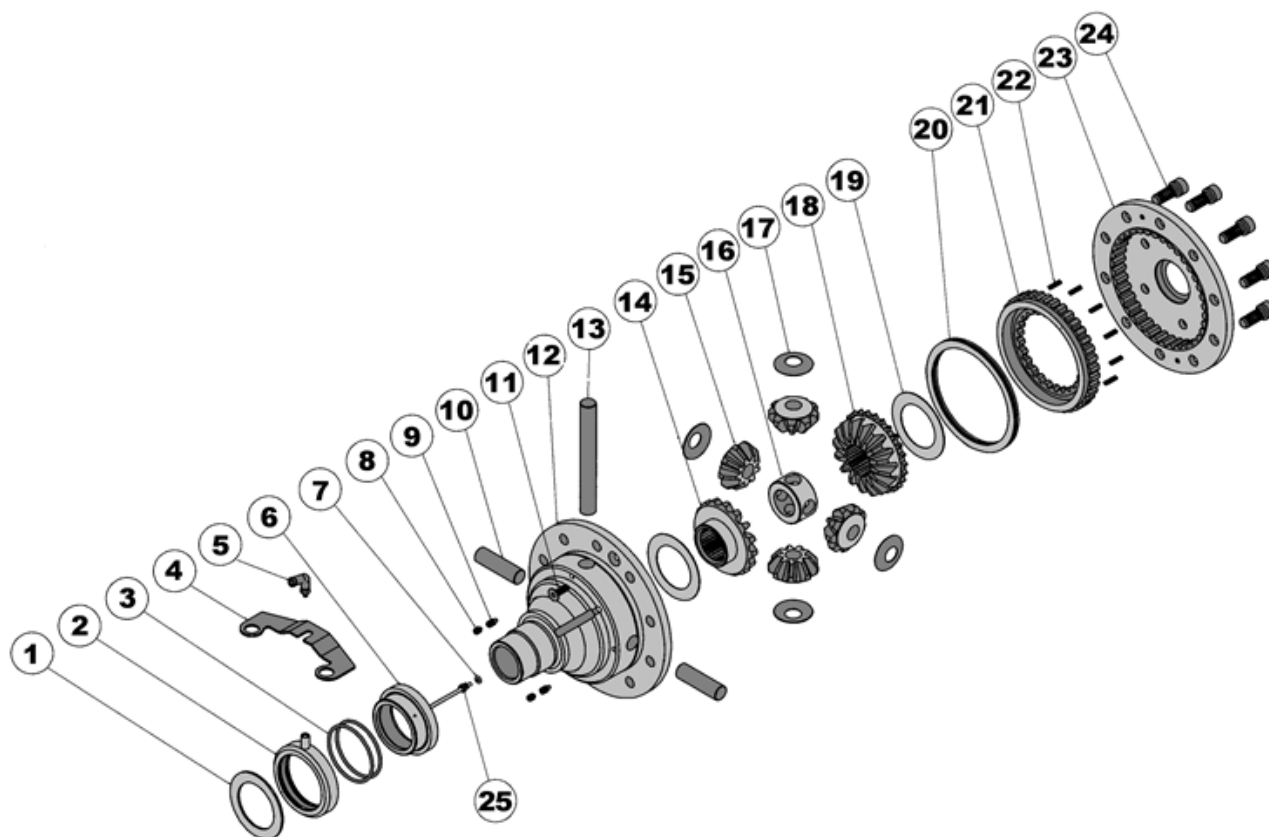
* Not illustrated in exploded view

NOTES

- For replacement O-rings use only BS141 Viton 75.
Standard ring gear bolts must be replaced with grade 12 cap screws (supplied).
For the 35 spline Ford 9" refer to RD99 ([Section 2.99](#)).
- Available only as complete 6 gear set # 728B112

RD55B

Ford 9",31 SPL**

****THIS MODEL WAS SUPERSEDED BY RD119, CROSSED OUT PARTS NOT AVAILABLE****EXPLODED DIAGRAM****SPECIFICATIONS**

Axle Spline	31 tooth, Ø33.5mm [1.32"]
Ratio Supported	All
Ring Gear ID	127.0mm [5.00"]
Ring Gear OD	229mm [9.0"]
Ring Gear Bolts	10 bolts on Ø152mm [6.00"]
Ring Gear Torque	95Nm [70 ft-lb]
OEM Backlash	0.25-0.41mm [0.010-0.016"]
Non-OEM Backlash	0.18-0.25mm [0.007-0.010"]
Bearing Cap Torque	81Nm [60 ft-lb]

ARB Corporation Ltd ▪ 42-44 Garden St Kilsyth VIC 3137 Australia
ARB 4X4 Accessories USA ▪ 720 SW 34th St Renton WA 98057 USA
Australia & International Customer Service ▪ +61 3 9761 6622
North America Customer Service ▪ Toll Free 866 293 9078
www.arb.com.au (AUS & Int) www.arbusa.com (N. America)

